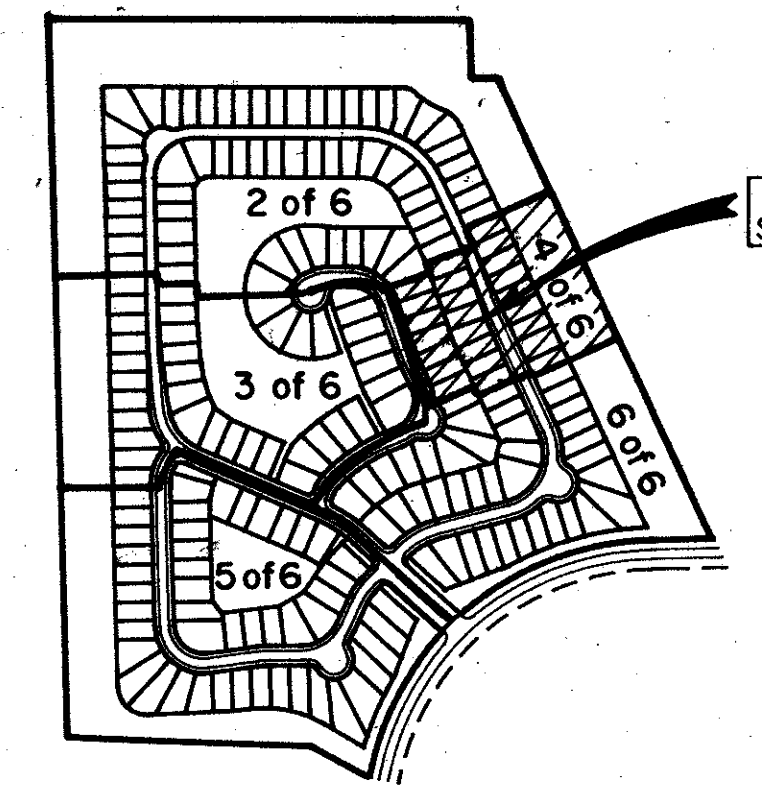


STATE OF FLORIDA  
 COUNTY OF PALM BEACH  
 THIS PLAT WAS FILED FOR  
 RECORD AT \_\_\_\_\_  
 THIS \_\_\_\_\_ DAY OF \_\_\_\_\_  
 A.D. 1990 AND DULY RECORDED  
 IN PLAT BOOK \_\_\_\_\_ ON PAGES  
 \_\_\_\_\_ AND \_\_\_\_\_  
 JOHN B. DUNKLE,  
 BY: \_\_\_\_\_ DC



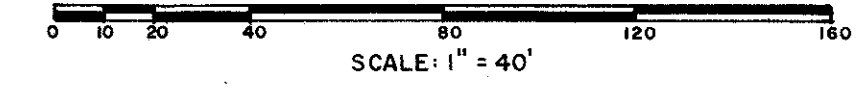
SHEET INDEX  
NTS

INDICATES ZERO LOT LINE

## BOCA CHASE 9A

A PORTION OF BOCA CHASE RIVIERA P.U.D.  
 BEING A PORTION OF THE NORTHEAST 1/4 OF SECTION 2;  
 TOWNSHIP 47 SOUTH, RANGE 41 EAST, PALM BEACH COUNTY, FLORIDA

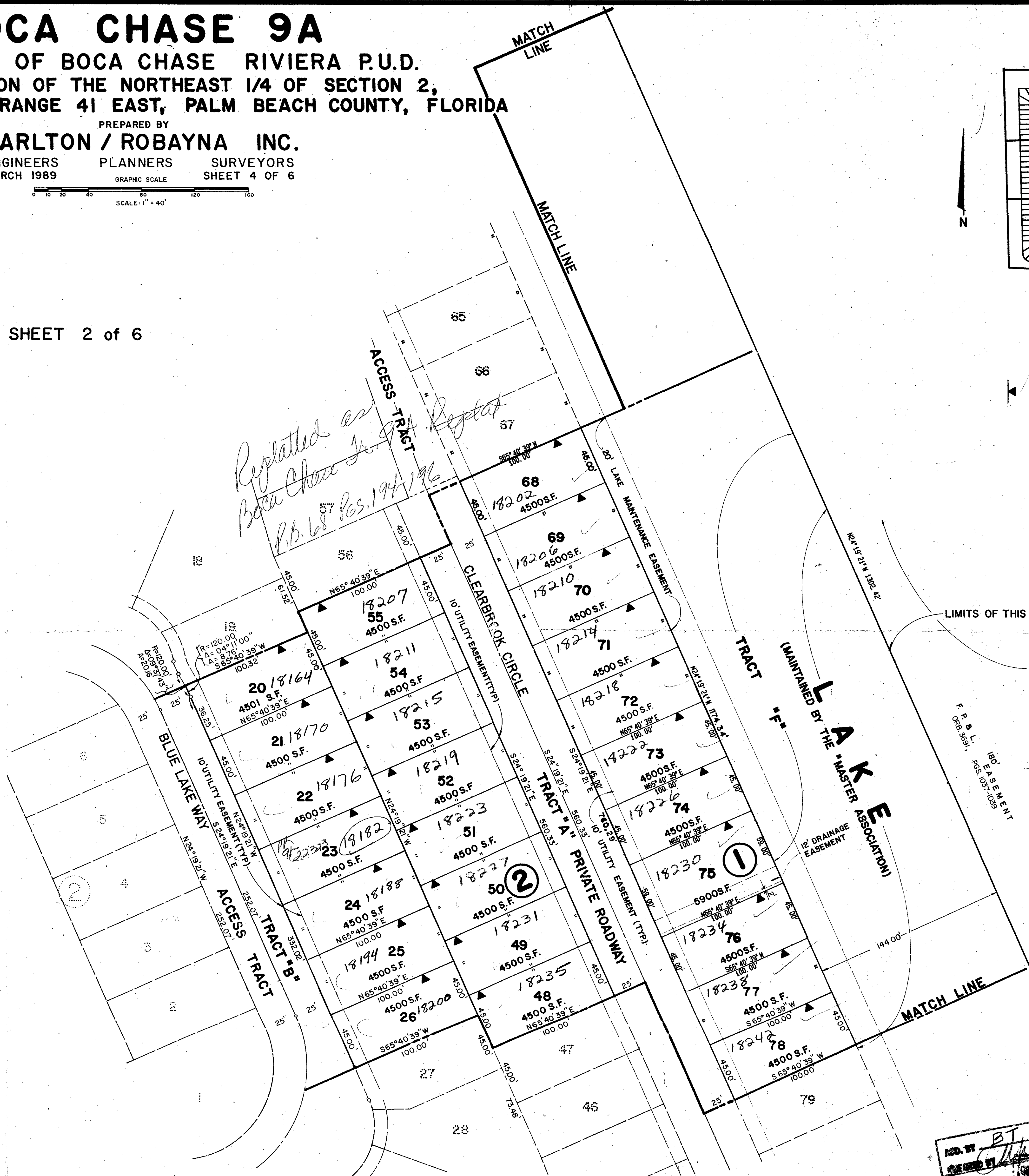
PREPARED BY  
**CARLTON / ROBAYNA INC.**  
 ENGINEERS PLANNERS SURVEYORS  
 MARCH 1989 GRAPHIC SCALE SHEET 4 OF 6



SHEET 2 of 6

SHEET 3 of 6

SHEET 6 of 6



LIMITS OF THIS PLAT

SWEETWATER SECTION FOUR  
P.B. 57, PG. 86, 87 & 88.

LAKE  
 (MAINTAINED BY THE MASTER ASSOCIATION)

REV. BY BT  
 CHECKED BY [Signature]

### BOCA CHASE 9A

### 65/186

0303-011  
 Ret. 72-118

SUBDIVISION \* Boca Chase 9A  
 BOOK 65 PAGE 186  
 FLOOD ZONE A0-1 FLOOD MAP # 100B  
 QUAD #68 ZONING  
 SE  
 PUD NAME Boca Chase - Riviera P.U.D.  
 ZIP CODE 33434